



# Diskeeper

Day frame : Last 24 hours (16/05/2020 - 17/05/2020)

## Dashboard

<b>I/Os Eliminated</b>		
<u>Total I/Os Eliminated</u>	<u>Read I/Os Eliminated</u>	<u>Write I/Os Eliminated</u>
3.525 million	2.740 million	785 749
	47%	38%

**Storage I/O Time Saved (ddd hh:mm:ss)**

**000 05:23:05**

<b>File System Optimization</b>	
<u>Fragments Prevented and Eliminated</u>	<u>Free Spaces Consolidated</u>
24 111	1 642

## I/O Performance

	<u>IOPS</u>	<u>MB/Sec</u>	<u>Latency (msecs)</u>	<u>RD/WRT %</u>
<b>Avg:</b>	3,763	0,453	0,126	73/27
<b>Min:</b>	0,329	0,016	0,001	
<b>Max:</b>	159,073	11,081	2,447	

## Total Workload

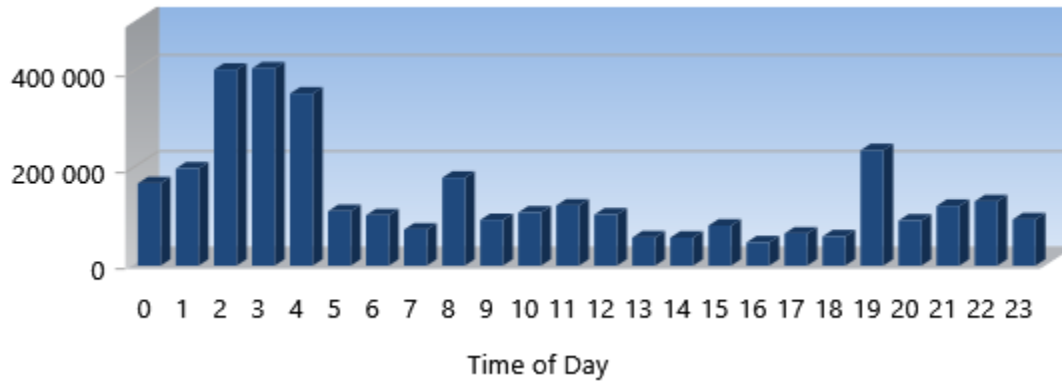
**924.994 GB**

## Memory Usage

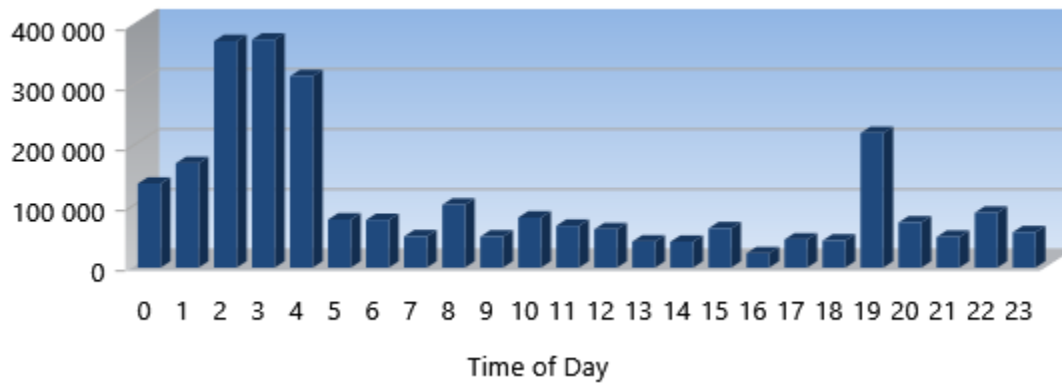
<u>Total Memory (DRAM)</u>		<u>Free Memory Used by Cache</u>	<u>[Total Free Memory]</u>
15.875 GB	<b>Avg:</b>	2.092 GB	[5.962 GB]
<u>Data from Cache</u>	<b>Min:</b>	0.267 GB	[3.010 GB]
13.630 GB	<b>Max:</b>	4.198 GB	[8.317 GB]

# Analytics

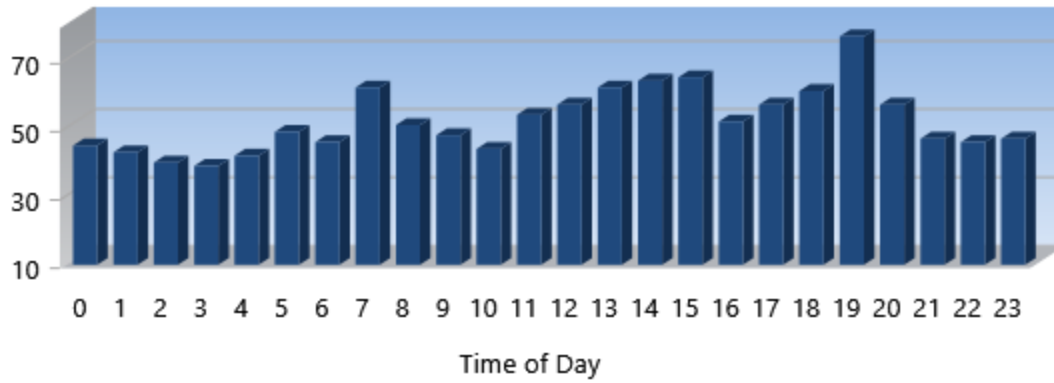
## Total I/Os Eliminated



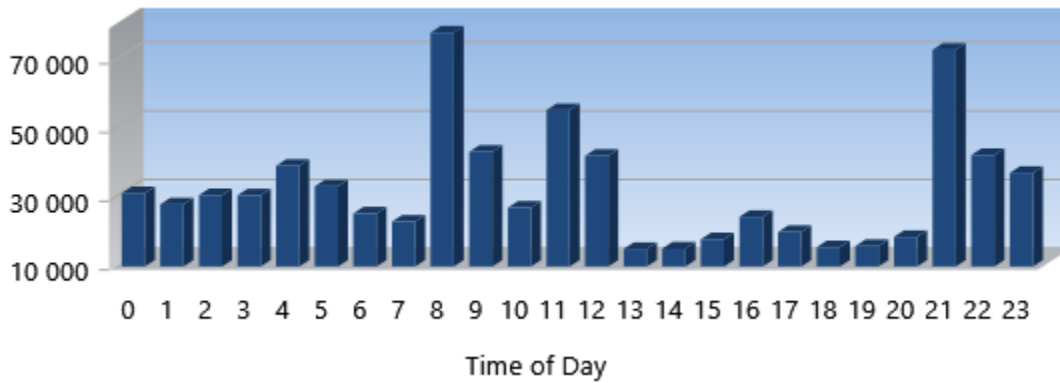
## Read I/Os Eliminated



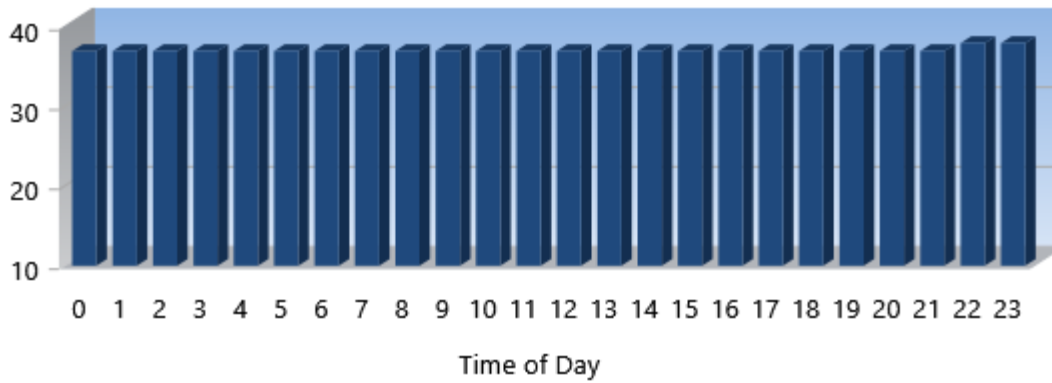
### % Read I/Os Eliminated



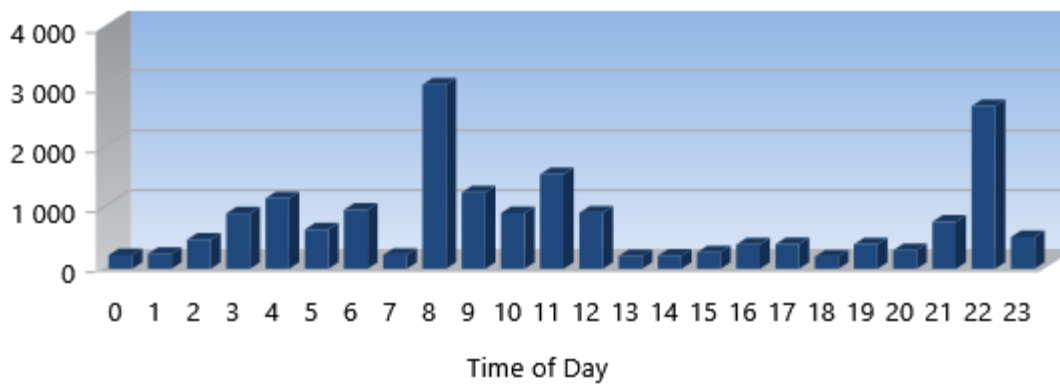
### Write I/Os Eliminated



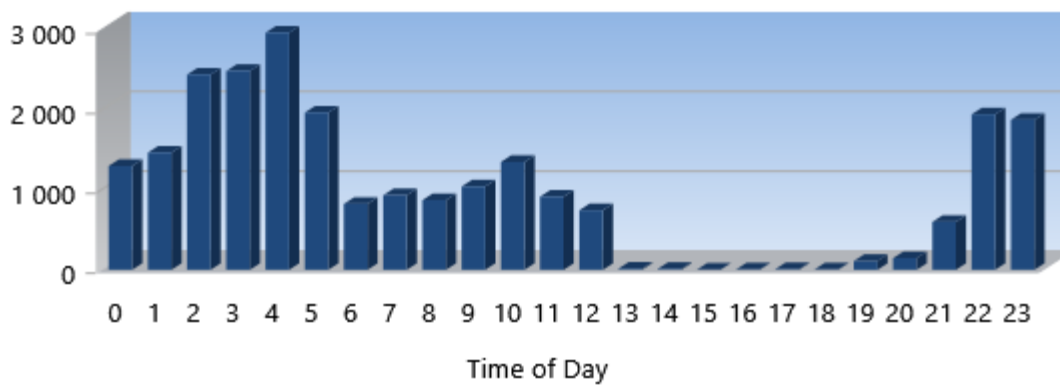
### % Write I/Os Eliminated



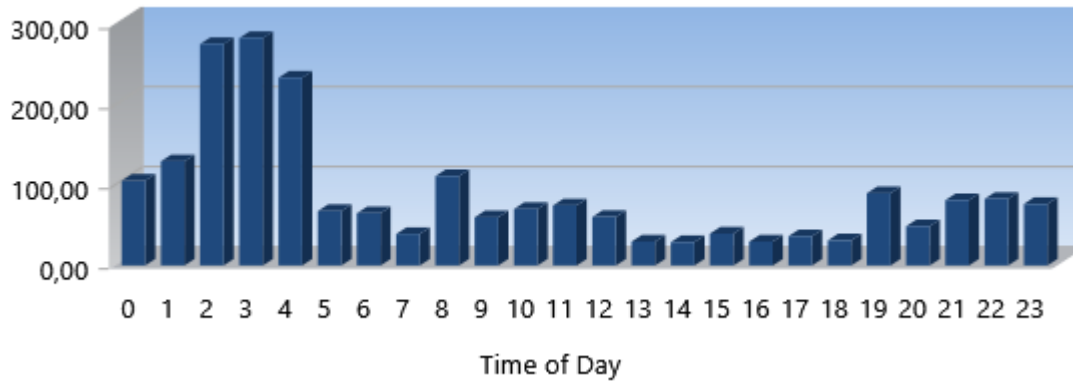
### I/O Time Saved (seconds)



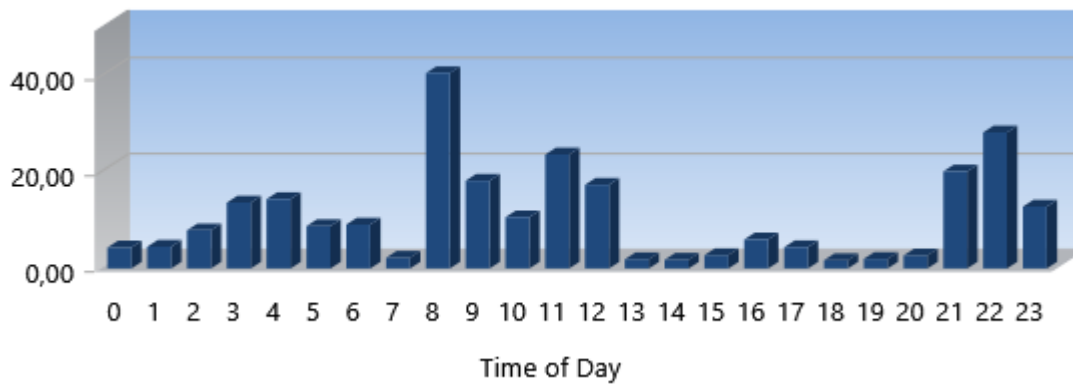
### Fragments Prevented and Eliminated



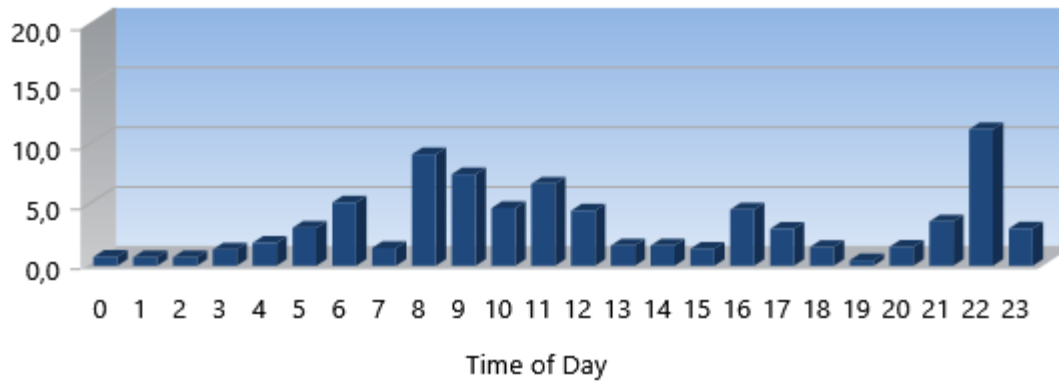
## IOPS



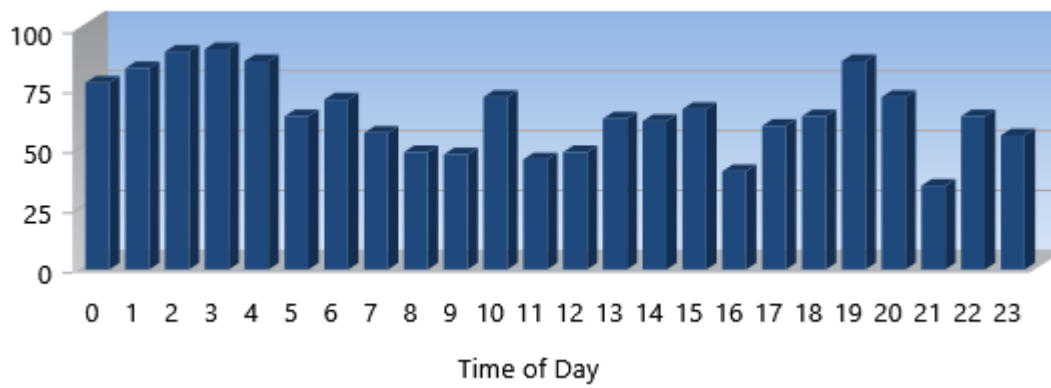
## Throughput (MB/Sec)



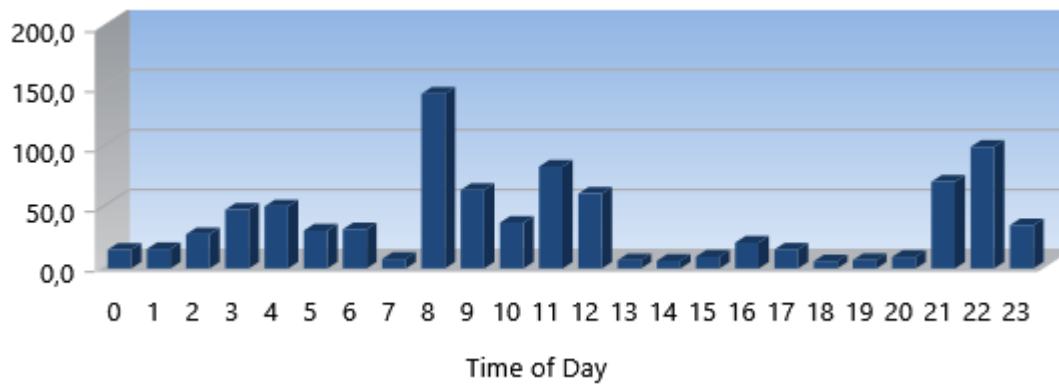
## I/O Response Time



## Read/Write %



## Throughput (GB Total)



## Data from Cache (GB)

